



welcome
TO

Sheraton Guilin Hotel -
We're located on the Li
River in enchanting
Guilin, with a grandly
renovated lobby, club
lounge, and guest
rooms with garden or
river views.

Rooms

Our deluxe city hotel boasts 408 modern, well-appointed guest rooms, including 17 suites. All rooms feature The Sheraton Sweet Sleeper™ Bed, individually-controlled heating and air-conditioning, 42" plasma flat screen televisions, and personal computer outlets.

Choose from our wide variety of room types. Each Classic Room has a glass wall that separates the bedroom from the bathroom, which features rainforest shower, a deep-soaking bathtub, and a centrally-located floating wash basin. Elegant Rooms overlook the garden and swimming pool, while Premium Rooms have tranquil Li River vistas.

Junior Suites are suffused by natural light through terrace doors, which also provide magnificent city views. On the top level, Premier Suites ensure the best perspective of the Li River through floor-to-ceiling windows. We also offer Starwood Preferred Guest® rooms, connecting rooms, disability-accessible rooms, and nonsmoking rooms.

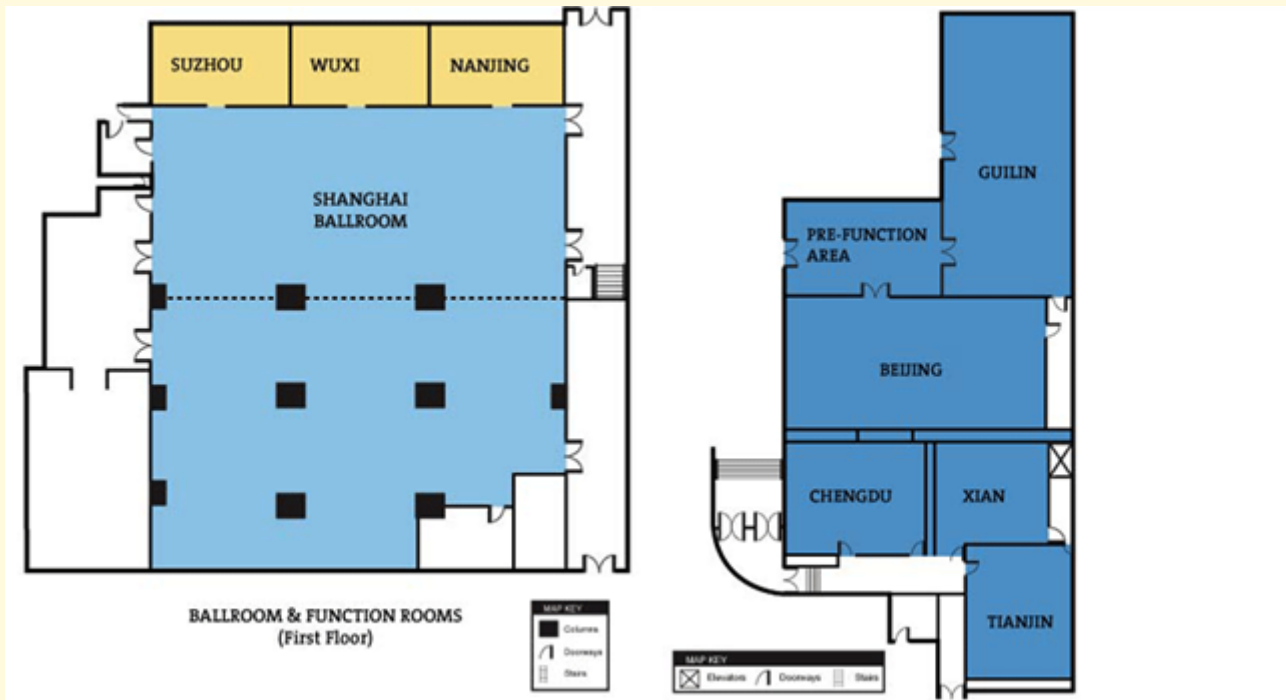
Overview

Visit the Sheraton Guilin Hotel, ideally located along the Li River in the heart of the enchanting city of Guilin. Guilin has been an inspiration to Chinese poets and artists for centuries, thanks to its breathtaking scenery rich in limestone crags, deep caves, and lush paddy fields. Now, with the completion of a full renovation, the hotel is as beautiful as the landscape it calls home. Our guest rooms, restaurant, and lobby have all been reimagined with your comfort in mind.

Features

We are dedicated to achieving complete guest satisfaction and are well equipped to keep you refreshed, relaxed and totally in touch.

Your daily workout routine does not have to change just because you are away from home. Swim laps in the outdoor swimming pool. Or head to the gymnasium where you'll find all the gear for your cardiovascular training, bodybuilding, or simply toning your muscles. Sauna and massage facilities are also available, as well as poolside snacks and drinks in the summer, all located on the second floor of the hotel.



MEETING CAPACITY CHART

Room Name	Key	Dim. (l x w)	Area	Height	Banq.	Thtr.	Conf.	Rec.	Class	U-Shp	H.Sq.	Dinner	Dance
Level 1													
Suzhou	-	26.24' x 15.087999'	388.0sq. ft.	7.2'	24	35	15	10	15	-	-	-	-
Nanjing	-	26.24' x 15.087999'	388.0sq. ft.	7.2'	24	35	15	10	15	40	-	-	-
Wuxi	-	26.24' x 15.087999'	388.0sq. ft.	7.2'	24	35	15	10	15	-	-	-	-
Shanghai Ballroom	-	77.408' x 37.72'	2917.0sq. ft.	12.5'	150	240	60	200	140	60	-	-	140
Pre-function area	-	24.6' x 12.5'	312.0sq. ft.	9.2'	-	-	-	-	-	-	-	-	-
Beijing	-	48.871998' x 24.928'	1152.0sq. ft.	9.2'	40	80	45	40	60	-	-	-	40
Xian	-	20.664' x 19.68'	409.0sq. ft.	7.2'	-	20	12	20	-	10	-	-	-
Chengdu	-	39.36' x 22.96'	904.0sq. ft.	7.2'	-	60	30	45	40	40	-	-	-
Tianjin	-	29.52' x 21.32'	635.0sq. ft.	7.2'	-	40	-	30	28	20	-	-	-
Cathay	-	45.1' x 87.248'	3498.0sq. ft.	12.5'	210	-	120	200	-	-	-	-	200