



# welcome TO

Sheraton Taipei Hotel -  
Defined by its chic,  
contemporary Chinese  
décor, signature  
services like executive  
butlers take the  
definition of luxury to  
the next level.

## Rooms

Warm wood-tones enhance the overall theme of chic, modern Chinese beauty in our spacious 688 guest rooms and 68 suites. Incorporating elements of traditional Chinese elegance with simple and comfortable Western space architecture creates a great combination of function, fashion, and taste.

Our spacious Superior Rooms exhibit modern Chinese design with a king-size bed, plasma TV, mini bar, personal safe box, direct-dial telephones with voicemail, and High Speed Internet Access.

Deluxe Rooms feature natural earth tones and elegant Chinese pictographs throughout. In addition to king or twin beds, the rooms feature a bathroom with separate bath and shower.

Elegant antique furniture add dramatic touches to our beautifully-appointed Premier Rooms, complete with a separate sitting area and outstanding views.

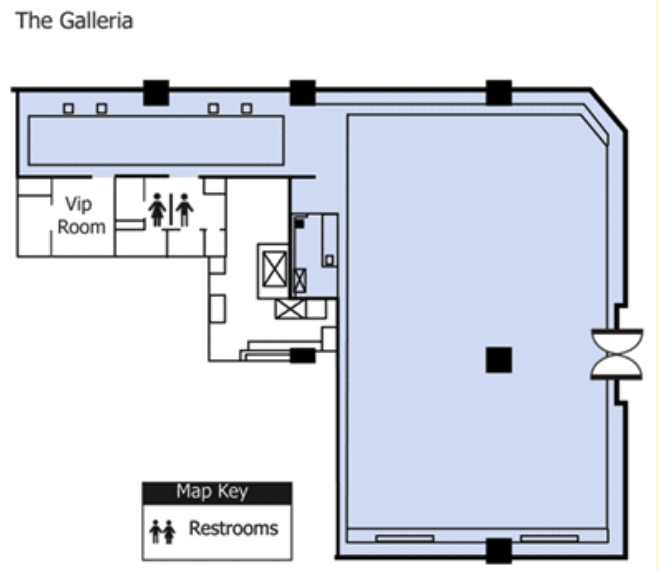
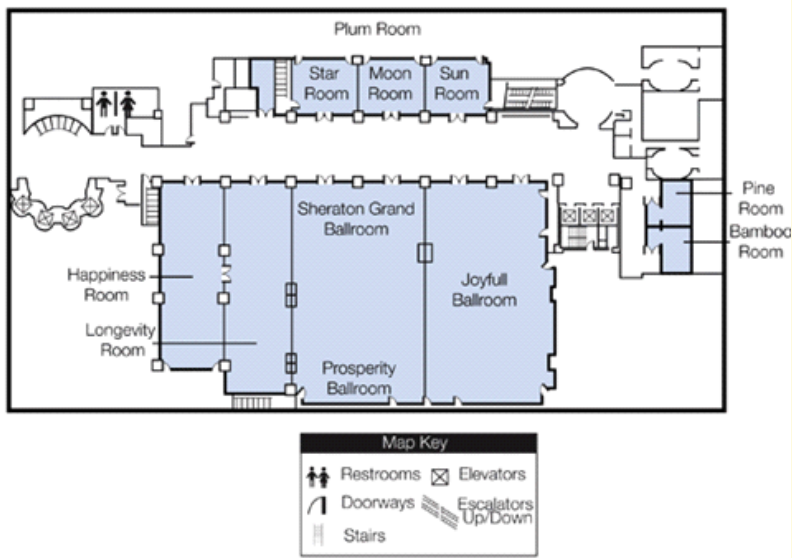
The bright and spacious Director Room incorporates modern Chinese styling with delicate, yet practical amenities providing a comfortable and contemporary environment. All rooms feature The Sheraton Sweet Sleeper™ Bed, marble bathrooms with separate baths and showers, signature bath amenities, DVDs, and audiovisual facilities.

## Overview

Conveniently located in the heart of Taipei's commercial and government districts, Sheraton Taipei Hotel puts all of Taipei and the surrounding areas at your doorstep. Major destinations throughout the city are no more than 10 minutes away via MRT (Mass Rapid Transit), as the Shantao Temple MRT station is located adjacent to the hotel. The terminal for the high speed rail to Kaohsiung is a short three-minute MRT ride away. We are also easily accessible from the Taoyuan International Airport and the Sung Shan Domestic Airport.

## Features

The Sheraton Taipei Hotel offers a full range of recreational facilities and services to make your stay enjoyable, relaxed, and healthy. The Sheraton Taipei Club provides outstanding recreational facilities including a sauna, squash court, fitness center, massage parlor, hair salon, outdoor swimming pool, and medical clinic. Classic and contemporary works of art are presented in the hotel's Art Promenade where periodic exhibitions and cultural presentations allow you to immerse yourself in a complete cultural experience during your stay.



**MEETING CAPACITY CHART**

Room Name	Key Dim. (l x w)	Area	Height	Banq.	Thtr.	Conf.	Rec.	Class	U-Shp	H.Sq.	Dinner	Dance
<b>Basement 2</b>												
Joyful Ballroom	- -	5338sq. ft.	15.7'	360	400	-	400	220	-	-	-	-
Prosperity Ballroom	- -	5516sq. ft.	15.7'	384	400	-	400	220	-	-	-	-
Longevity Room	- -	2669sq. ft.	7.9'	196	200	-	150	108	48	54	-	-
Happiness Room	- -	2455sq. ft.	7.9'	144	150	-	100	100	42	48	-	-
Sheraton Grand Ballroom	- -	15978sq. ft.	15.7'	1152	1200	-	1200	650	-	-	-	-
Sun Room	- -	712sq. ft.	7.9'	36	40	-	-	27	24	30	-	-
Moon Room	- -	747sq. ft.	7.9'	36	40	-	-	27	24	30	-	-
Star Room	- -	712sq. ft.	7.9'	36	40	-	-	27	24	30	-	-
Sun + Moon + Star Room	- -	2171sq. ft.	7.9'	120	200	-	100	90	-	-	-	-
Pine Room	- -	712sq. ft.	7.9'	-	-	-	-	-	-	-	-	-
Bamboo Room	- -	712sq. ft.	7.9'	-	-	-	-	-	-	-	-	-
Plum Room	- -	534sq. ft.	7.9'	-	-	-	-	-	-	-	-	-
<b>Lobby Floor</b>												
The Galleria	- -	-	10.8'	-	160	12	140	81	-	-	-	-
<b>Second Floor</b>												
My Humble House	- -	3268sq. ft.	7.5'	216	240	-	200	150	-	-	-	-
Room A	- -	621sq. ft.	7.5'	48	60	-	40	30	18	26	-	-
Room B	- -	687sq. ft.	7.5'	48	60	-	40	30	18	26	-	-
Room C	- -	687sq. ft.	7.5'	48	60	-	40	30	18	26	-	-